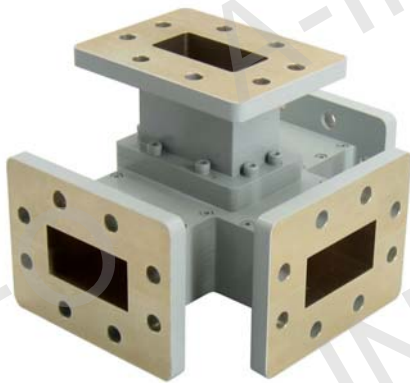
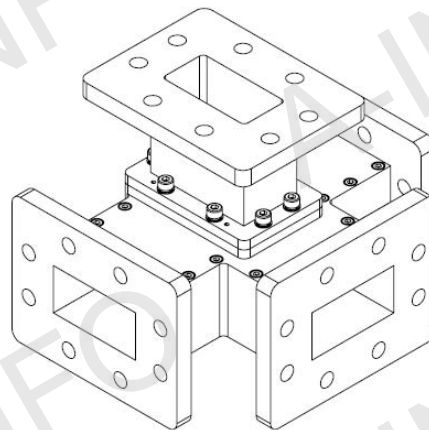
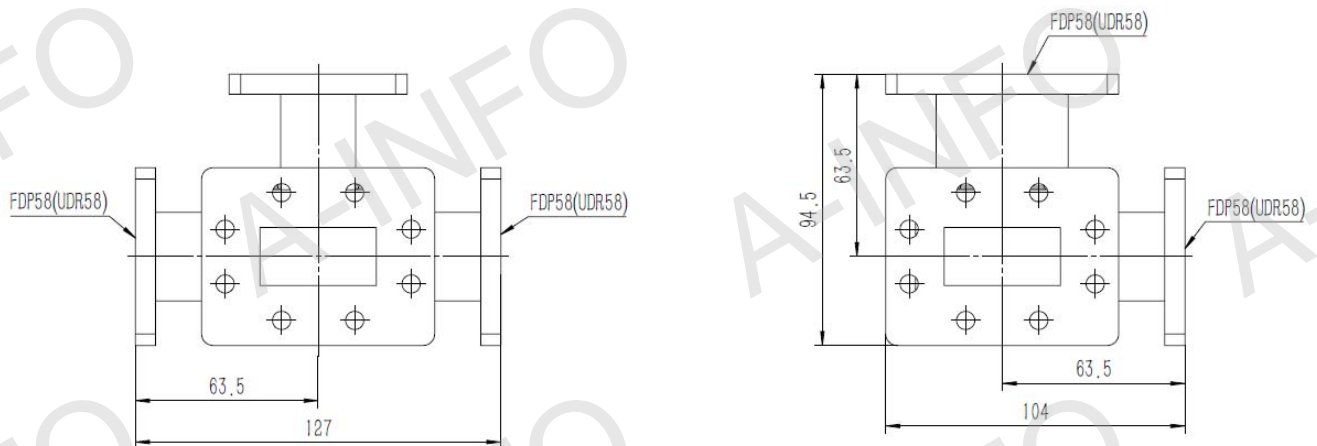


Technical Specification



EIA WR	WR159
Frequency Range(GHz)	4.90 – 7.05
VSWR H-Plane	1.3:1 Typ.
VSWR E-Plane	1.5:1 Typ.
Unbalance(dB)	±0.4
Isolation(dB)	30
Band Width	FULL
Flange Type	FDP58(UDR58)
Material	Al
Size(mm)	127 x 104 x 94.5
Net Weight(Kg)	0.7 Around

Outline Drawing (Size: mm)



AINFO Inc.

Page 1 of 5

China(Beijing):
China(Chengdu):
USA :

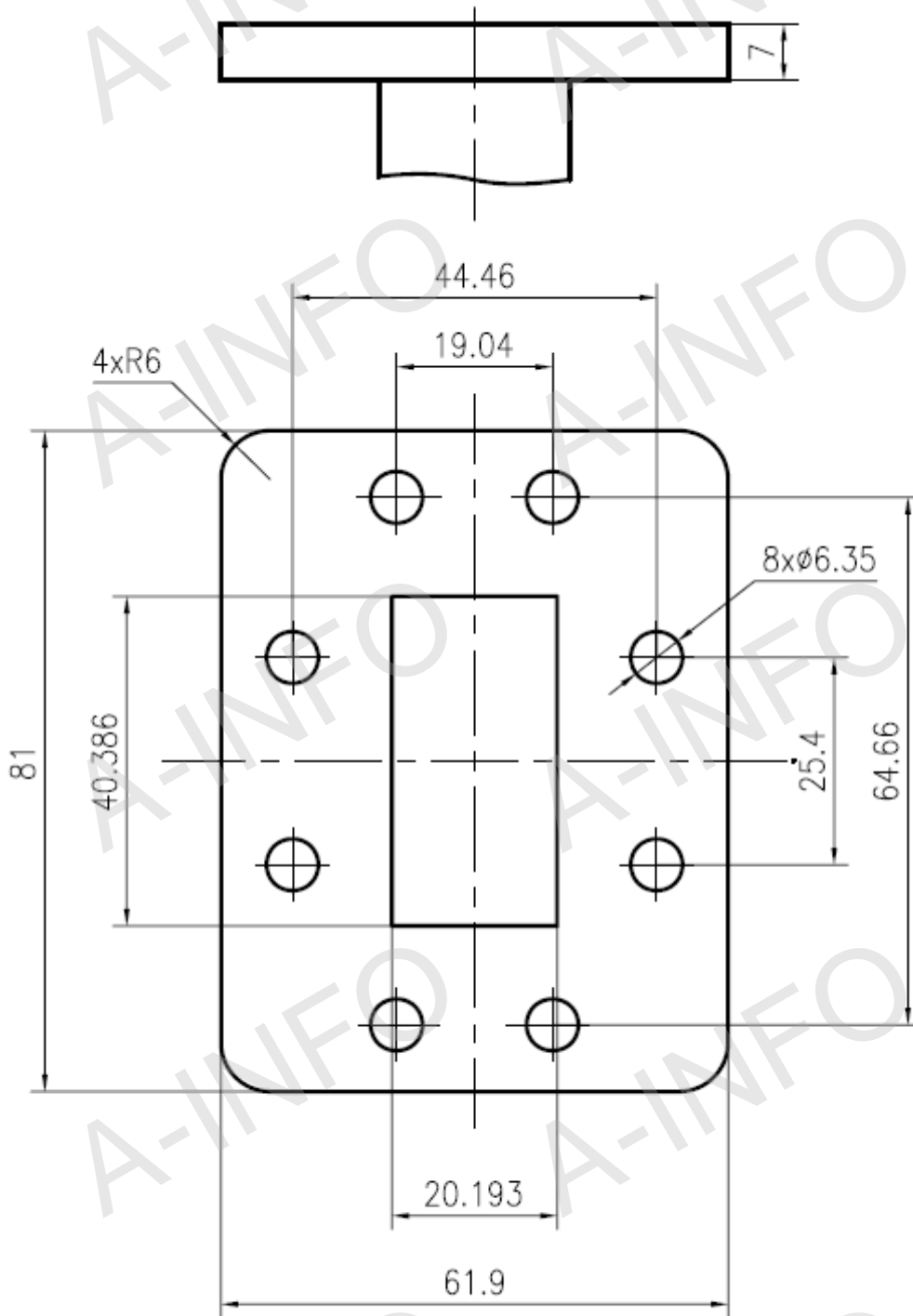
Tel: (+86) 10-6266-7326,
Tel: (+86) 28-8519-2786,
Tel: (+1) 949-639-9688,

(+86) 10-6266-7327
(+86) 28-8519-3044
(+1) 949-639-9608

Fax: (+86) 10-6266-7379
Fax: (+86) 28-8519-3068
Fax: (+1) 949-639-9670

Website: www.ainfoinc.com
Email: sales@ainfoinc.com

Flange Drawing (Size: mm)



FDP58

AINFO Inc.

Page 2 of 5

China(Beijing):
China(Chengdu):
USA :

Tel: (+86) 10-6266-7326,
Tel: (+86) 28-8519-2786,
Tel: (+1) 949-639-9688,

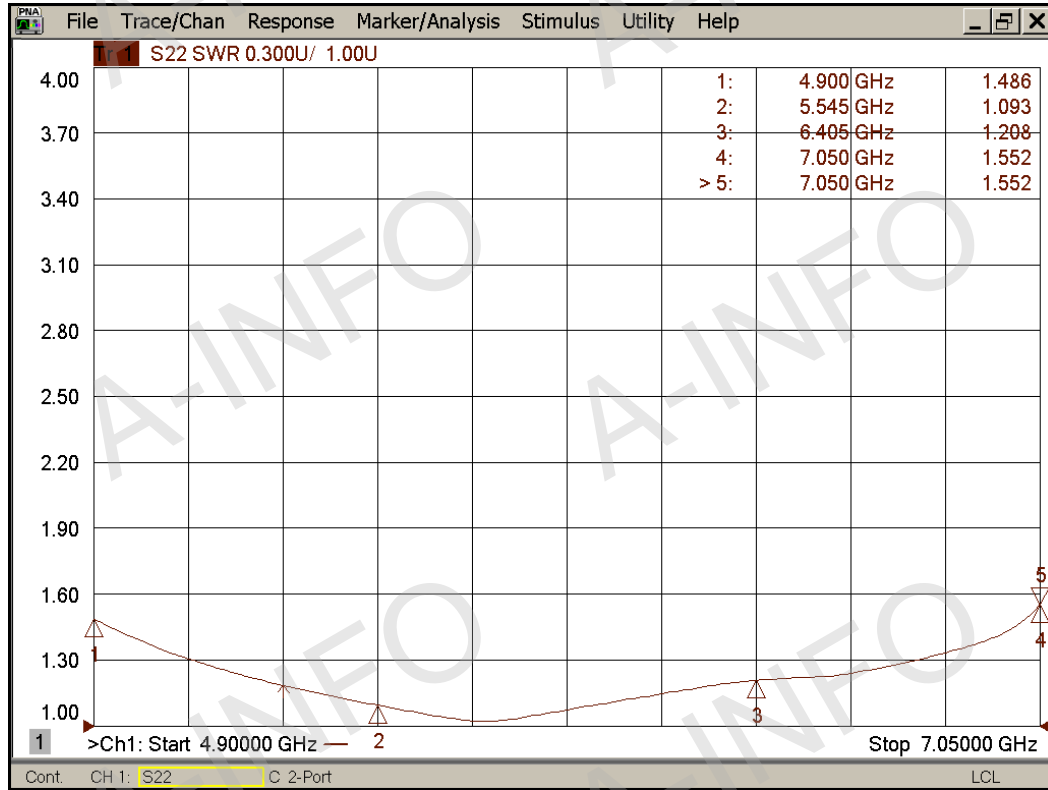
(+86) 10-6266-7327
(+86) 28-8519-3044
(+1) 949-639-9608

Fax: (+86) 10-6266-7379
Fax: (+86) 28-8519-3068
Fax: (+1) 949-639-9670

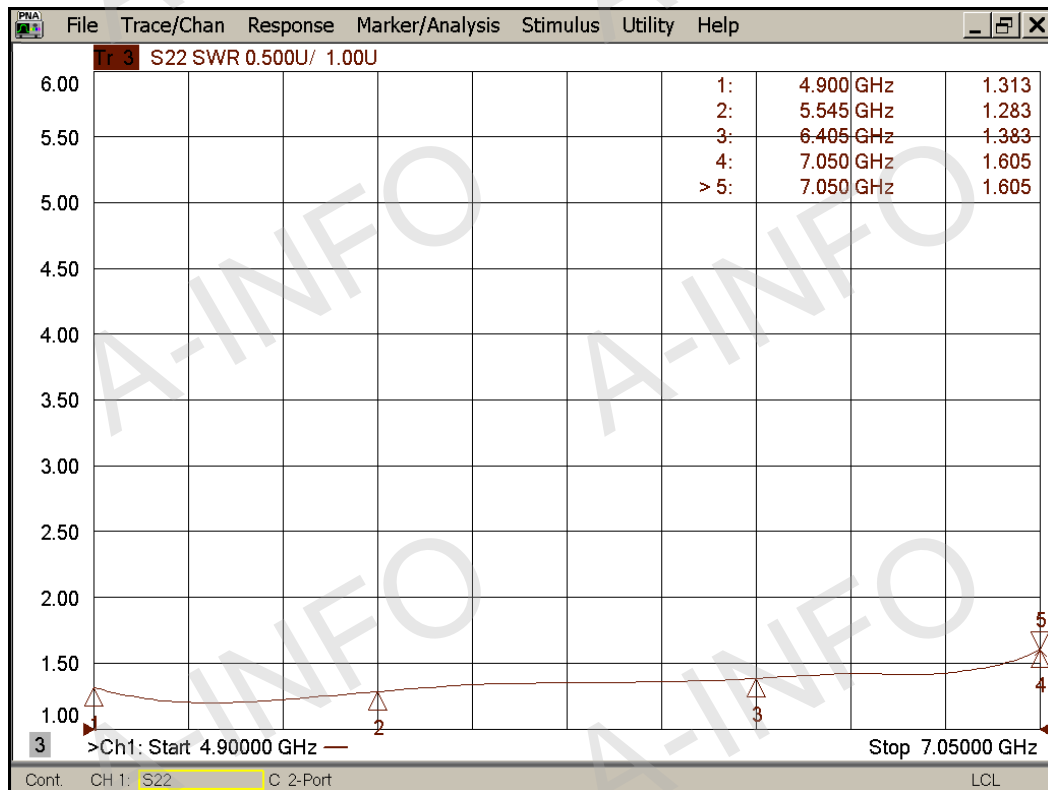
Website: www.ainfoinc.com
Email: sales@ainfoinc.com

Test Results

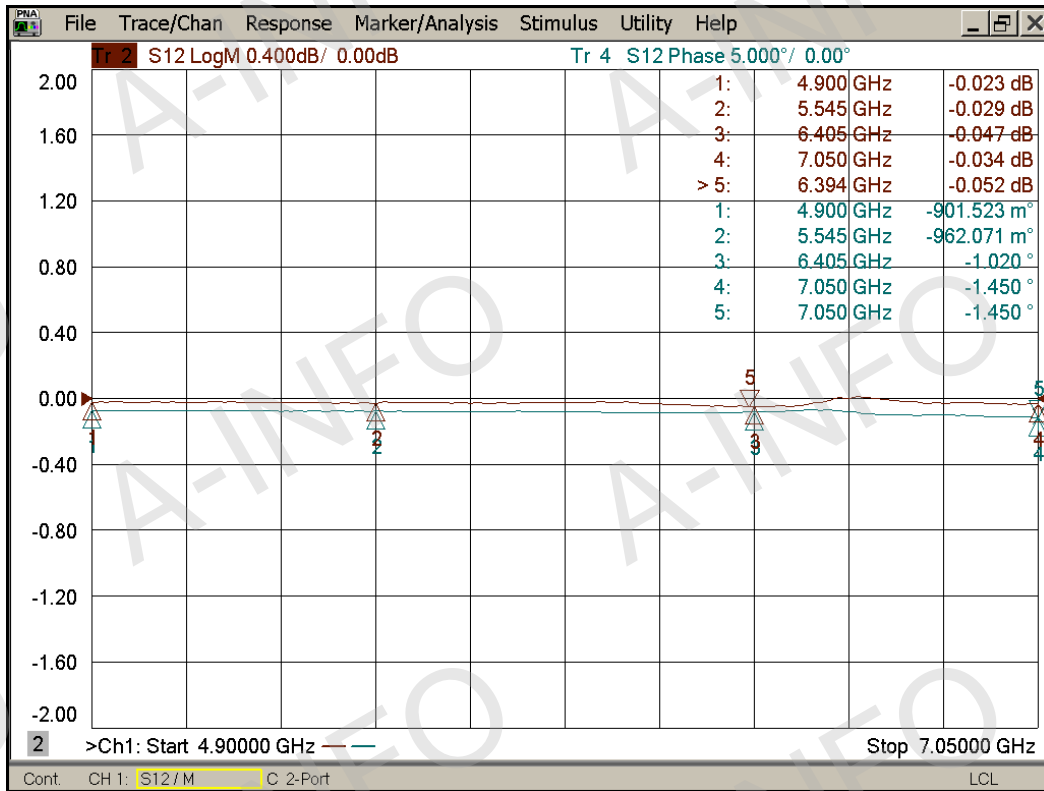
1. VSWR H-Plane



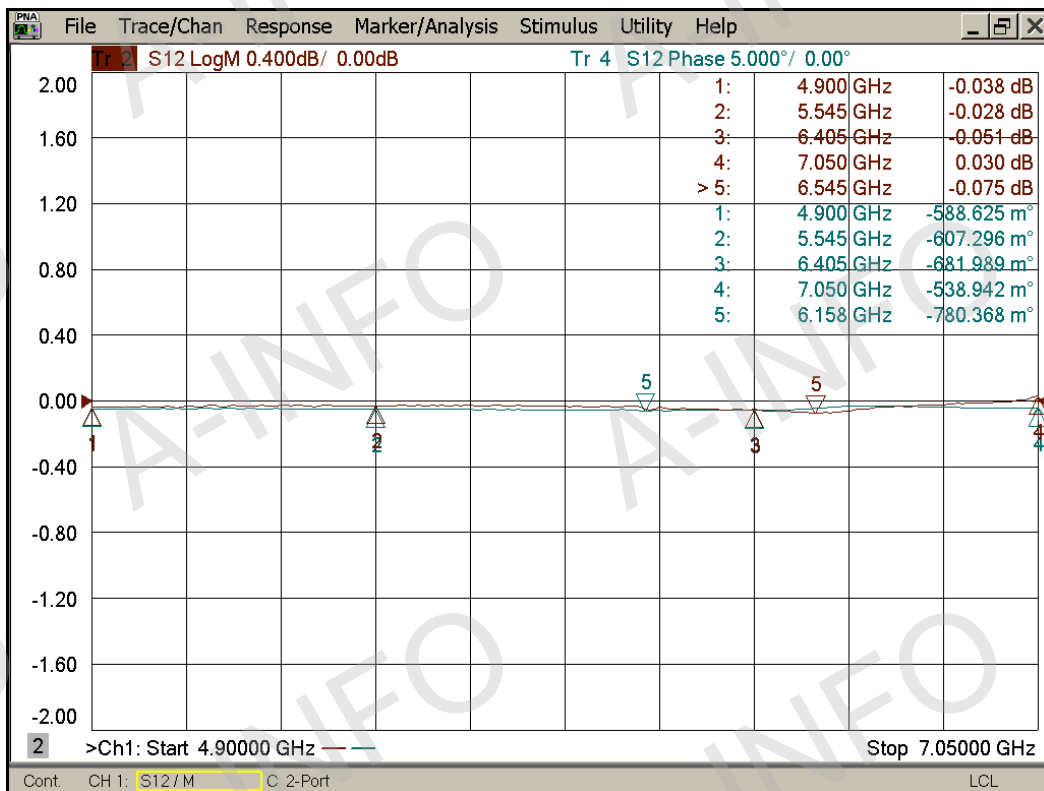
E-Plane



2. Unbalance H-Plane



E-Plane



3. Isolation

